

AC 2600

Wireless Dual Band Gigabit Router

Archer C2600



Highlights

- **4-Stream for the Fastest Wi-Fi Speeds** – The Archer C2600 reaches the fastest max speeds available over its 2.4GHz (800Mbps) and 5GHz (1733Mbps) bands
- **Run Multiple Devices Simultaneously** – The Archer C2600 operates 3x faster by running MU-MIMO to serve multiple devices at once instead of one at a time.
- **Multi-Task without Slowing Down** – A powerful 1.4GHz dual-core processor lets you smoothly surf, stream, and game at the same time
- **Maximum Range** – 4 dual band detachable high performance antennas provide maximum Omni-directional wireless coverage with beamforming technology



AC2600



4-Stream
11AC



MU-MIMO



Dual-Core
1.4 GHz CPU



Dual USB
3.0 Ports



Beamforming
Technology



TP-LINK
Tether APP

Features



Speed

- Blazing Fast Wireless Speed – Combined wireless speeds up to 2.6Gbps at 2.4GHz & 5GHz band concurrently
- Gigabit Wired Speed – Full shielded gigabit ports ensure ultrafast data transfer speeds
- Support 802.11 ac – Offering 3 times faster data rate than 802.11n in a single stream
- Dual-core Processor – 1.4GHz dual-core processor boosts data transfer rate



Wi-Fi Range

- Ultimate Range & Reliable Wi-Fi – High-powered amplifiers ensure continuous WiFi signal to all your devices while boosting widespread coverage throughout your very large home
- 4 Dual Band Antennas – 4 dual band detachable antennas provide maximum Omni-directional wireless coverage



Reliability

- Simultaneous Dual Band – Reduces interference for more stable connections
- More Focused Wi-Fi – Archer C2600's beamforming technology locate your connected devices and boost wireless signal strength in those directions, delivering a more targeted, reliable and highly efficient wireless connection
- QoS – Advanced QoS automatically recognizes & prioritizes streaming & gaming applications

Features



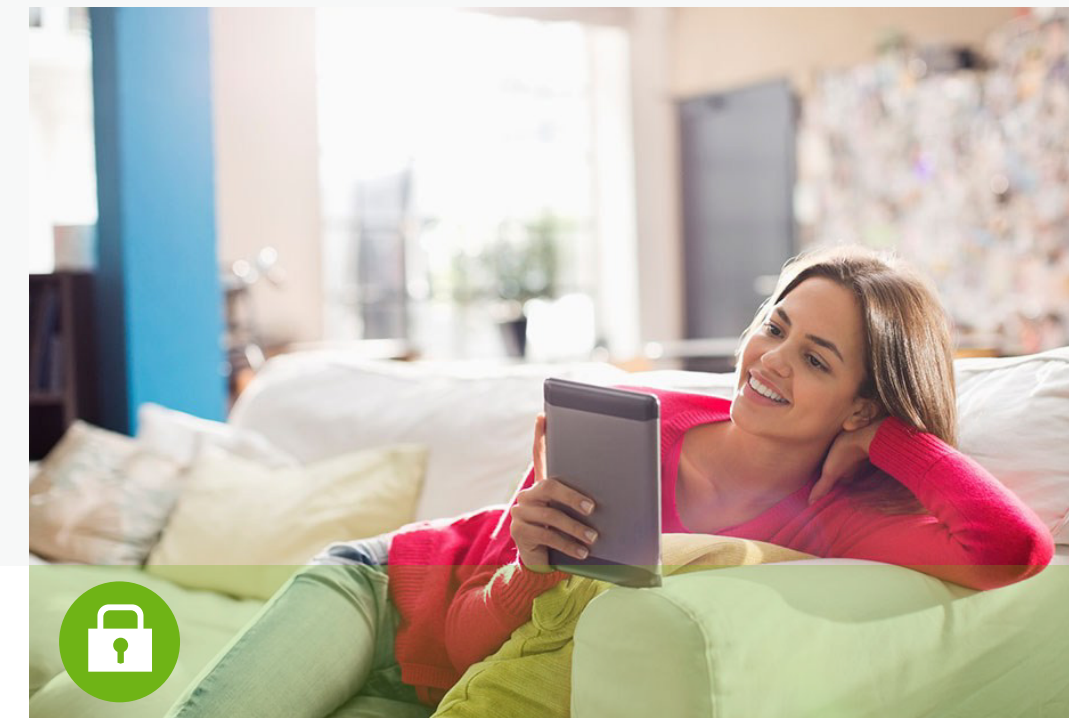
Easy Sharing

- **Dual USB 3.0 Ports for Fast Sharing** – With two ultra-fast USB 3.0 ports, you can access and share a printer as well as your files and media locally. Via the router's FTP server, you can also have access to your files & media with networked devices remotely
- **10x Faster Transfer Speed** – The USB 3.0 port provides up to 10x faster USB hard drive access than earlier USB 2.0 connections
- **Built-in Print Server** – Supports wireless printing from multiple computers (works in conjunction with a USB Printer)
- **Built-in Media Server** – Allows users to play music, video and view photos



Ease of Use

- **New Web UI** – Ensures a quick installation within 15 seconds, making your network setup out of hassle.
- **Fast Encryption** – Easy one-touch WPA wireless security encryption with the WPS button
- **Easy On/Off** – Wi-Fi On/Off Button and LED On/Off allow separately users to turn wireless radio and LED on or off
- **Power On/Off** – Convenient power saving
- **Hassle-free Management with Tether App** – Tether App allows easy network management at your fingertips

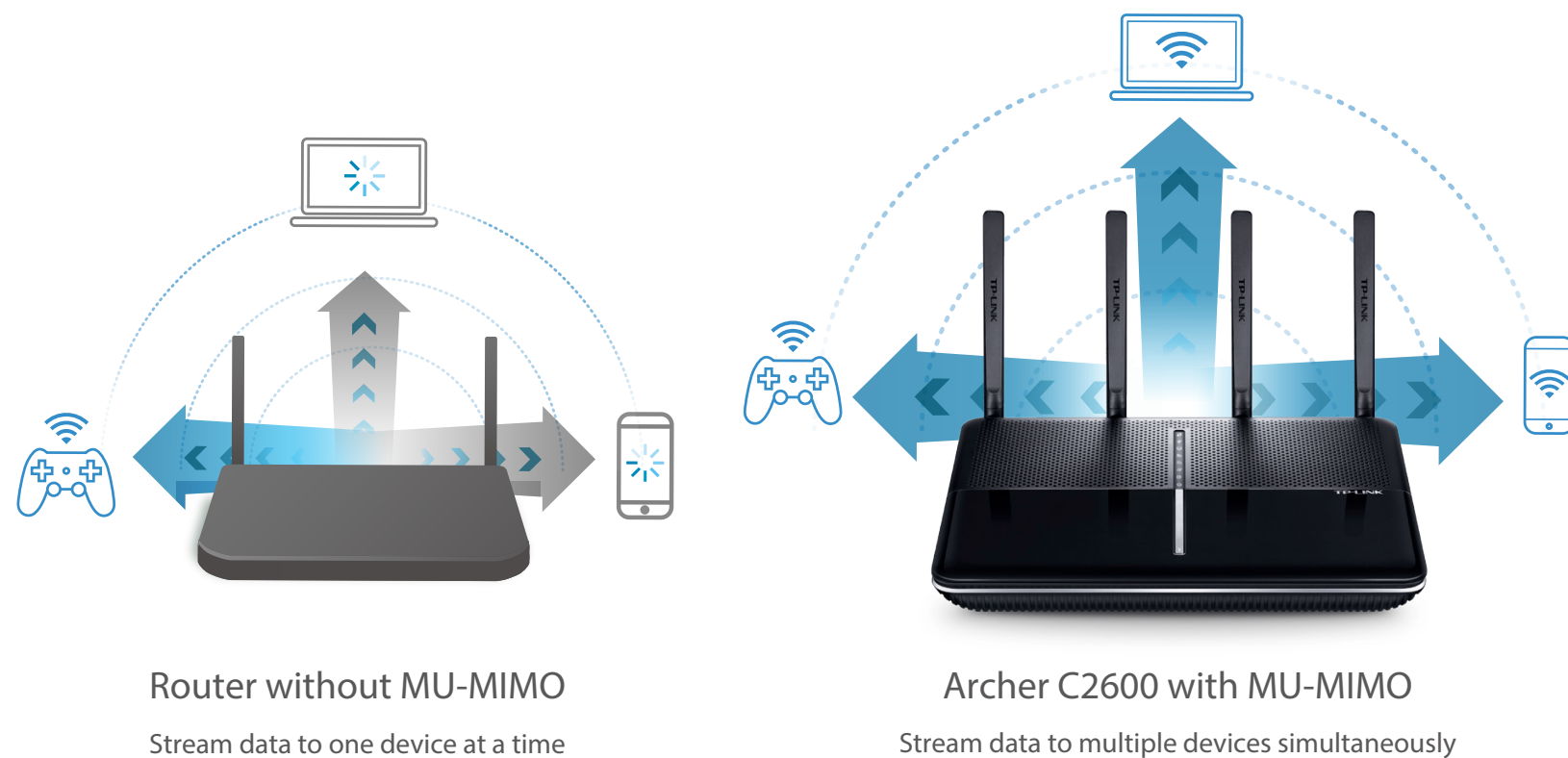


Security

- **Access Control** – Guest Network Access provides secure Wi-Fi access for guests
- **Parental Control** – Establish restricted access policies for all connected devices
- **Easy Bandwidth Management** – IP-based Bandwidth Control makes it easier for you to manage the bandwidth of connected devices
- **Encryptions for Secure Network** – WPA-PSK/WPA2-PSK encryptions provide active defense against security threats for user networks

MU-MIMO for Powerful Multi-Tasking

With groundbreaking MU-MIMO technology, the Archer C2600 is able to stream data to several devices simultaneously. It dramatically reduces wait-time for all clients by making better use of wireless capacity that are wasted by traditional routers. The result is a stunning 3x increase in Wi-Fi speeds for each device in your crowded network.



TP-LINK Tether App Easy Network Management at Your Fingertips

TP-LINK Tether provides the easiest way to access and manage the router on your iOS and Android devices. From Setup to Parental Control, Tether provides a simple, intuitive user interface to see what the status of your router is, who's online and what their privileges are. TP-LINK Tether is going to be adaptable to more router models.



Specifications

Hardware

- **Ethernet Ports:** 4 10/100/1000Mbps LAN Ports & 1 10/100/1000Mbps WAN Port
- **USB Port:** 2 USB 3.0 Ports
- **Button:** WPS Button, Reset Button, Wireless On/Off Button, LED On/Off Button, Power On/Off Button
- **External Power Supply:** 12V/4A
- **Dimensions (W x D x H):** 10.4×7.8×1.5 in. (263.8×197.8×37.3mm)



Wireless

- **Wireless Standards:** IEEE 802.11ac/n/a 5GHz, IEEE 802.11b/g/n 2.4GHz
- **Frequency:** 2.4GHz and 5GHz
- **Signal Rate:** 1733Mbps at 5GHz, 800Mbps at 2.4GHz
- **Transmit Power:** CE: <20dBm(2.4GHz), <23dBm(5GHz)
FCC: <30dBm
- **Reception Sensitivity:**
 - 5GHz: 11a 6Mbps: -91dBm
 - 11a 54Mbps: -73dBm
 - 11n HT20: -69dBm
 - 11n HT40: -67dBm
 - 11ac HT20: -66dBm
 - 11ac HT40: -61dBm
 - 11ac HT80: -58dBm
 - 2.4GHz: 11g 54Mbps: -76dBm
 - 11n HT20: -73dBm
 - 11n HT40: -71dBm
- **Wireless Function:** Enable/Disable Wireless Radio, WDS Bridge, WMM, Wireless Statistics
- **Wireless Security:** 64/128-bit WEP, WPA/WPA2, WPA-PSK/WPA-PSK2 encryptions

Specifications

Software

- **WAN Type:** Dynamic IP/Static IP/PPPoE/PPTP(Dual Access)/L2TP(Dual Access)/Bigpond
- **DHCP:** Server, Client, DHCP Client List, Address Reservation
- **Quality of Service:** WMM, Bandwidth Control
- **Port Forwarding:** Virtual Server, Port Triggering, UPnP, DMZ
- **Dynamic DNS:** DynDns, Comexe, NO-IP
- **VPN Pass-Through:** PPTP, L2TP, IPSec
- **Access Control:** Parental Control, Local Management Control, Host list, Access Schedule, Rule Management
- **Firewall Security:** DoS, SPI Firewall, IP Address Filter/Domain Filter, IP and MAC Address Binding
- **Protocols:** Supports IPv4 and IPv6
- **USB Sharing:** Supports Samba(Storage)/FTP Server/Media Server/Printer Server
- **Management:** Access Control, Local Management, Remote Management
- **Guest Network:** 2.4GHz guest network x 1, 5GHz guest network x 1

Others

Package Contents

- AC2600 Wireless Dual Band Gigabit Router Archer C2600
- 4 Detachable Antennas
- Power Supply Unit
- Ethernet Cable
- Quick Installation Guide

Certification

- CE, FCC, RoHS

System Requirements

- Microsoft Windows 2000, XP, Vista™ or Windows 7, 8, 8.1, 10, MAC OS, NetWare, UNIX or Linux
- Internet Explorer 11, Firefox 12.0, Chrome 20.0, Safari 4.0, or other Java-enabled browser
- Subscription with an Internet Service Provider (for Internet access)

Environment

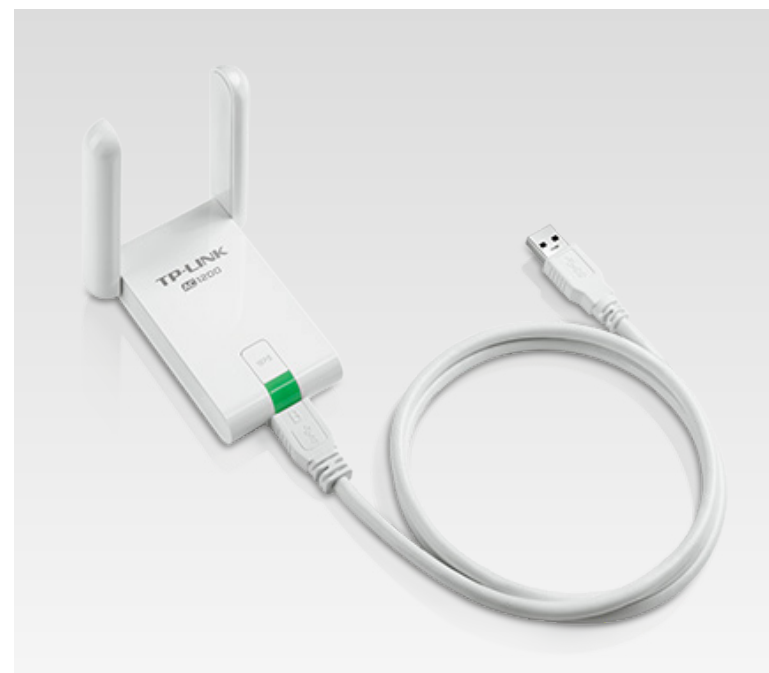
- Operating Temperature: 0°C ~40°C (32°F ~104°F)
- Storage Temperature: -40°C ~70°C (-40°F ~158°F)
- Operating Humidity: 10%~90% non-condensing
- Storage Humidity: 5%~90% non-condensing

Others

Ideal to use with



- AC1900 Wireless Dual Band PCI Express Adapter Archer T9E



- AC1200 High Gain Wireless Dual Band USB Adapter Archer T4UH

Similar Products



- AC1900 Wireless Dual Band Gigabit Router Archer C9



- AC1200 Wireless Dual Band Gigabit Router Archer C5



For more information, please visit

<http://www.tp-link.com/en/products/details/?categoryid=&model=Archer+C2600>



or scan the QR code left

Specifications are subject to change without notice. TP-LINK is a registered trademark of TP-LINK Technologies CO., Ltd. Other brands and product names are trademarks or registered trademarks of their respective holders. No part of the specifications may be reproduced in any form or by any means or used to make any derivative such as translation, transformation, or adaptation without permission from TP-LINK Technologies CO., Ltd.

Maximum wireless speed of up to 2600Mbps is the theoretical data rate derived from IEEE standard 802.11 specifications. Actual data throughput and wireless coverage will vary due to network conditions and environmental factors including volume of network traffic, building materials and construction, network overhead, actual data throughput rate, and wireless coverage. TP-LINK makes no express or implied representations or warranties about this product's compatibility with any future standards. 802.11ac 1300Mbps is approximately 3 times faster than 802.11n 450Mbps. 2.4GHz Performance Mode requires 256 QAM support on Wi-Fi client.

www.tp-link.com